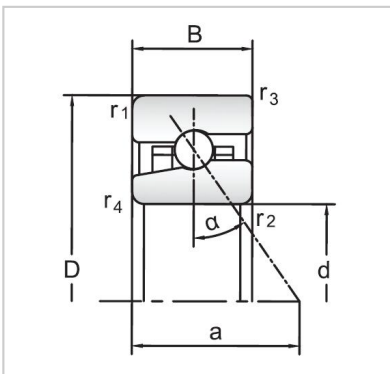


## Angular Contact Ball Bearings

### High speed Angular Contact Ball Bearings-H71915 AC



Bearing NO.	<b>H71915 AC</b>
Dimensions(mm)	
d	75
D	105
B	16
Basic Loading Ratings(KN)	
C	21.2
C0	16.3
Fatigue limit Pu (kN)	0.68
Calculation coefficient	-
f0	
Limiting speeds (r/min)	
Grease	15500
Oil	24 000
d1 ~	84.3
D1 ~	95.5
r1,2 min	<b>1</b>
r3,4 min	0.3
a	30
da,db min (mm)	79.6
Da max (mm)	100
Db max (mm)	102.6
ra max (mm)	<b>1</b>
rb max (mm)	0.3
Weight (kg)	0.34